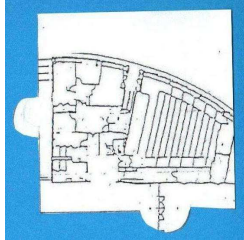


# PLAN DE LA VISITE

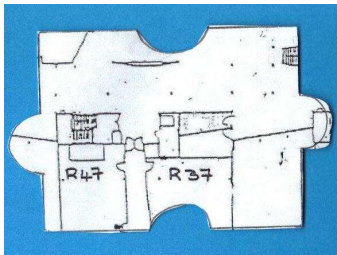
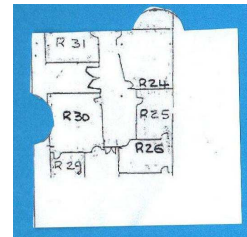
## Exposition *fragments*

### Un puzzle à reconstituer ...



Salle polyvalente, *Collector*, Tao ZHOU (1 – 2)

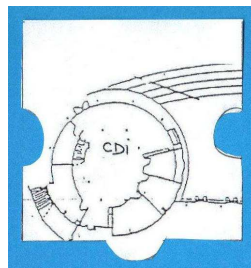
Couloir des langues, *Videocartographies : Aida, Palestine*, Till ROESKENS (3 – 4)



Espace élève, *Le serpent*, Aurélien FROMENT (5 – 6)

Bas escalier des sciences,  
*Technology/Transformation : Wonder Woman*,  
Dara BIRNBAUM (7 – 8)

CDI,



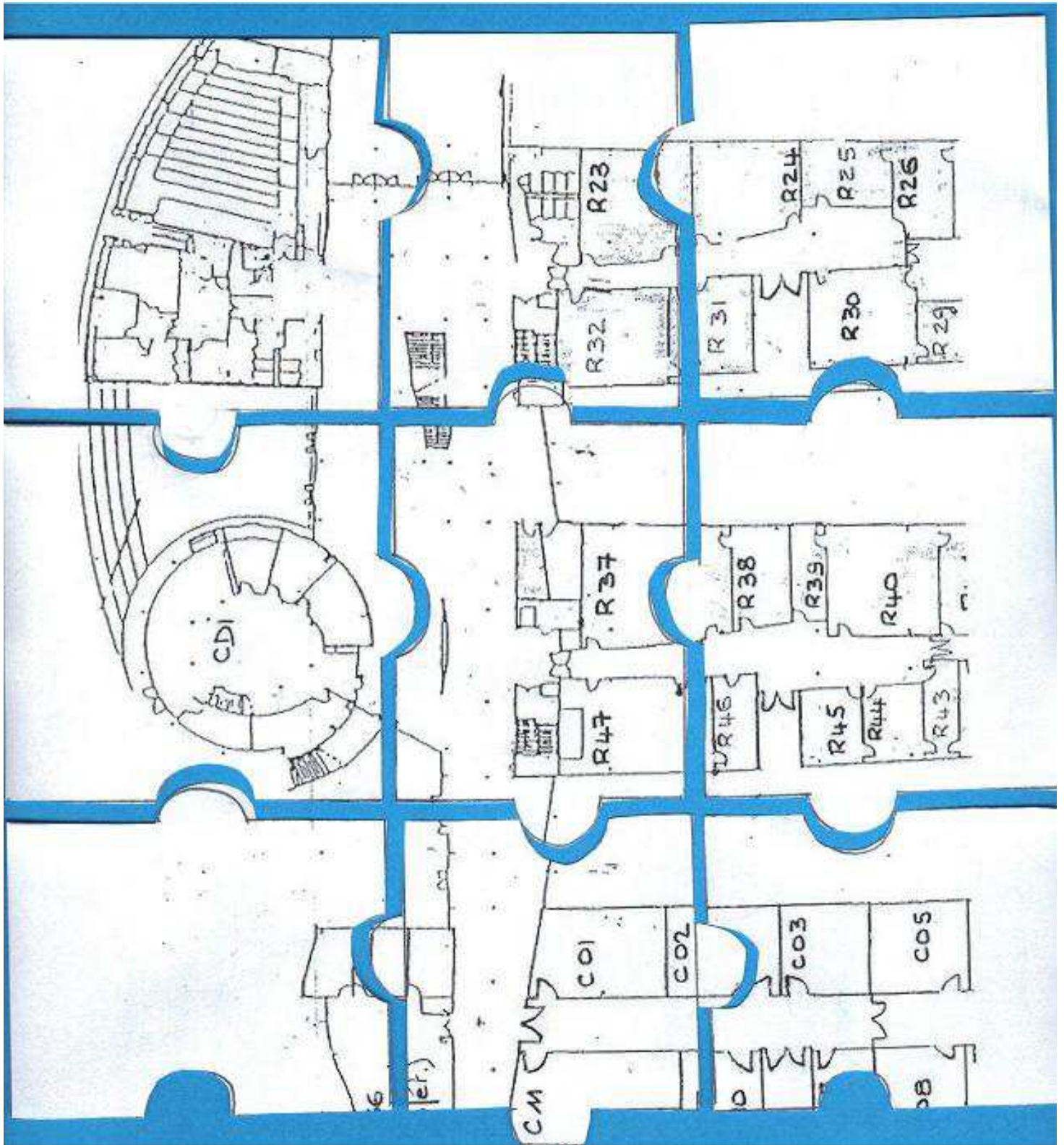
*Hors-Prises*, Loris GREAUD (9 – 10)

et

l'installation, *Prospective XXI siècle*, d'Arnaud MAGUET (11 – 12)

La G@lerie, galerie mobile d'art vidéo du lycée de l'Hautil, Année 2013 – 2014

# Solution



La G@lerie, galerie mobile d'art vidéo du lycée de l'Hautil, Année 2013 – 2014